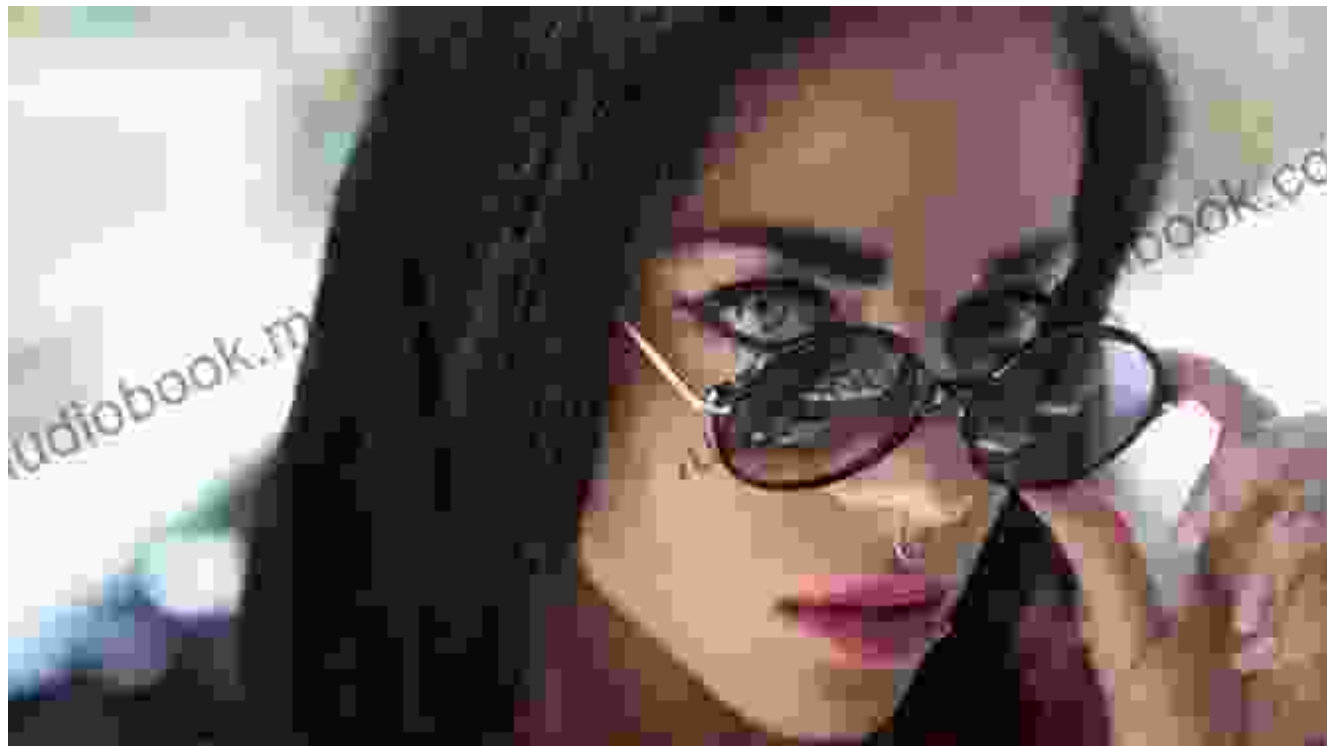


Grimmy Girl Tina Truax: The Enigmatic Artist with a Hauntingly Beautiful Vision



Grimmy's Girl by Tina Truax

★★★★☆ 4.5 out of 5

- Language : English
- File size : 2044 KB
- Text-to-Speech : Enabled
- Screen Reader : Supported
- Enhanced typesetting : Enabled
- Word Wise : Enabled
- Print length : 7 pages



: Unveiling the Alluring Enigma

Tina Truax, the enigmatic artist known as Grimmy Girl, has captivated the art world with her hauntingly beautiful paintings. Her works, often shrouded in darkness and melancholy, depict a realm of ethereal beings, macabre visions, and the unsettling beauty of death. Truax's tragic personal life adds to the intrigue surrounding her art, creating an aura of mystery and morbid fascination.

The Genesis of a Grim Vision

Truax was born in 1960 in a small town in Tennessee. Her childhood was marked by adversity and loss, which left a profound impact on her psyche. She was drawn to art at an early age, using it as a means to express her inner turmoil and grapple with the darkness that haunted her.

The Rise of Grimmy Girl

In the 1990s, Truax adopted the moniker Grimmy Girl, which reflected the macabre themes that dominated her art. Her paintings quickly gained recognition for their unique blend of darkness and beauty. She depicted ethereal figures with hauntingly pale skin, piercing eyes, and otherworldly auras.

Exploring the Depths of Darkness and Beauty

Truax's works often explore the interplay between life and death, darkness and light. Her paintings are populated by skeletal figures, decaying bodies, and symbols of mortality. Yet, amidst the darkness, a glimmer of beauty shines through. Her ethereal beings exude a sense of grace and vulnerability, creating a haunting tension between the macabre and the enchanting.

The Influence of Personal Tragedy

Truax's personal life was marked by tragedy. She struggled with addiction and mental illness, which deeply influenced her art. The pain and suffering she experienced infused her paintings with a raw and emotional intensity that resonates with viewers.

The Enigmatic Persona

Truax maintained an enigmatic persona that added to the allure of her art. She rarely gave interviews and remained aloof from the public eye. Her absence from the spotlight only heightened the mystique surrounding her and her work.

The Haunting Legacy

Tina Truax died tragically in 2009 at the age of 49. Her untimely demise left a void in the art world, but her legacy lives on through her haunting and unforgettable paintings. Her work continues to captivate and unsettle viewers, inviting them to contemplate the fragility of life and the enduring power of beauty amidst darkness.

: An Enduring Enigma

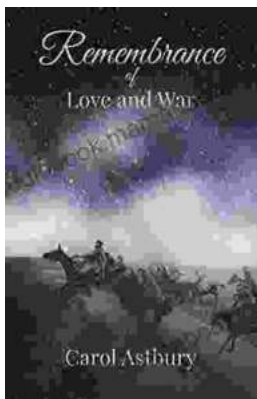
Grimmy Girl Tina Truax remains an enigmatic figure in the art world. Her hauntingly beautiful paintings have left an indelible mark on the collective consciousness. Through her art, she has given voice to the darkness within us all, and reminded us of the fleeting nature of life. Tina Truax's legacy as the Grimmy Girl will forever be intertwined with the macabre and the beautiful, leaving an enduring impression on those who encounter her mesmerizing creations.

Grimmy's Girl by Tina Truax

★★★★☆ 4.5 out of 5



Language : English
File size : 2044 KB
Text-to-Speech : Enabled
Screen Reader : Supported
Enhanced typesetting : Enabled
Word Wise : Enabled
Print length : 7 pages



Remembrance of Love and War: A Timeless Tale of Loss, Love, and the Search for Meaning

Erich Maria Remarque's *Remembrance of Love and War* is a poignant and thought-provoking novel that explores the themes of love, loss, and the search for...



To Kill Our Worthy Comrade: The Intriguing Lidiya Petrova Papers

In a labyrinth of secrets and deception, history whispers through the pages of time, revealing the chilling truth behind the assassination of...